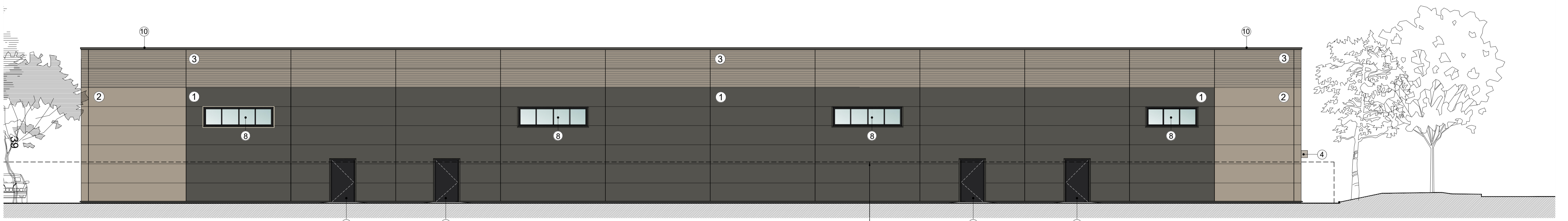
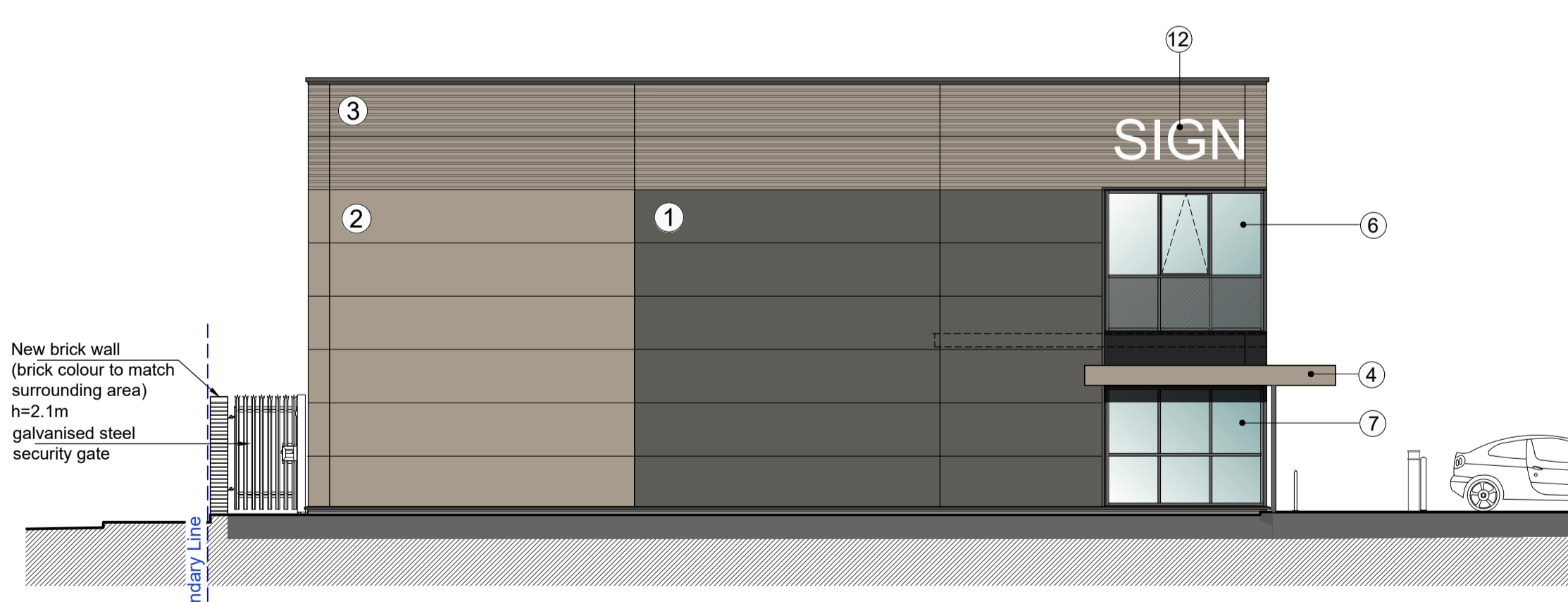




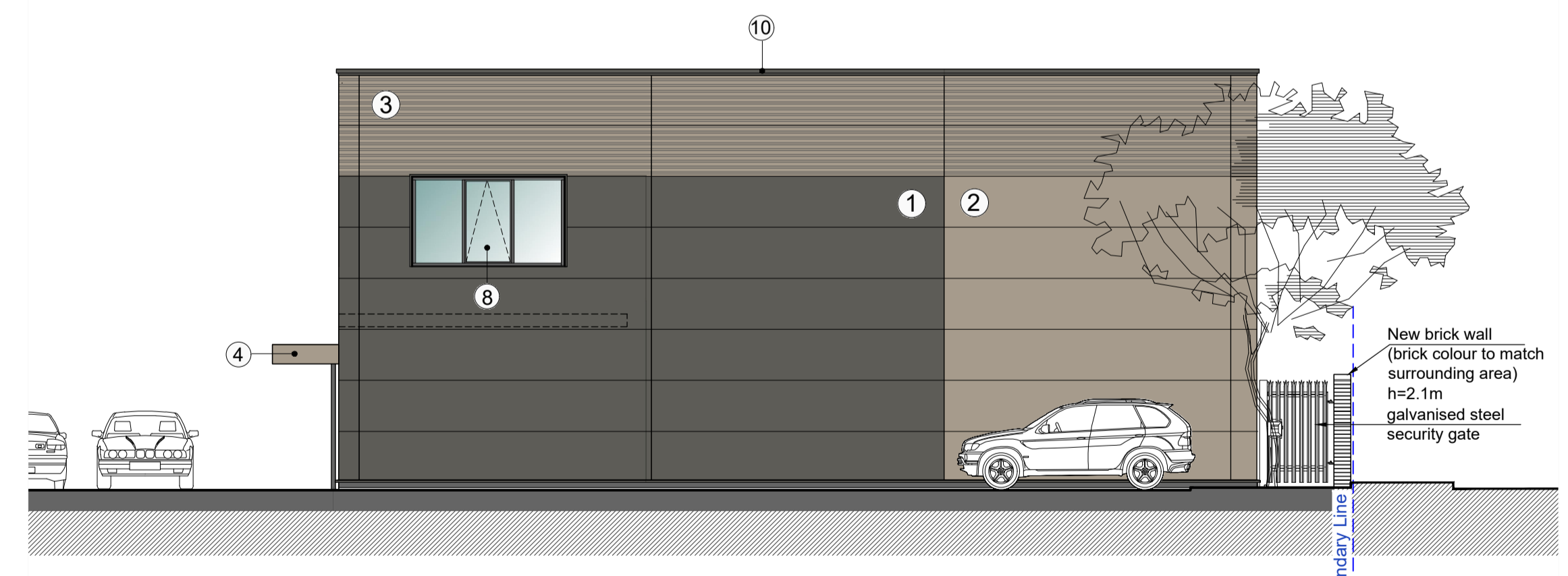
GA Elevation - Front (South-West)
Scale 1:100



GA Elevation - Rear (North-East)
Scale 1:100



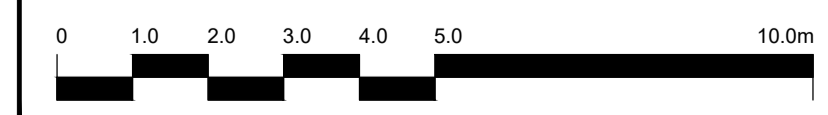
GA Elevation - Side (North-West)
Scale 1:100



GA Elevation - Side (South-East)
Scale 1:100

Outline of a new brick wall
(brick colour to match
surrounding area)
h=2.1m

- ① Horizontally laid KINGSPAN KS1000MM (Mini-Micro) panels (or similar approved) Colour: Spectrum - Umber Grey RAL7022
- ② Horizontally laid KINGSPAN KS1000MM (Mini-Micro) panels (or similar approved) Colour: Kingspan Spectrum Metallic- Beigestone RAL1035
- ③ Trapezoidal composite wall panel KINGSPAN QuadCore™ KS1000RW (or similar approved) Colour: Kingspan Spectrum Metallic- Beigestone RAL1035
- ④ Pressed metal feature canopy Powder coated- RAL 1035
- ⑤ Insulated sectional loading door colour RAL 9005
- ⑥ Double glazed aluminum window system with openable windows where indicated (PPC frames- RAL 9005)
- ⑦ Double glazed aluminum window system with entrance door and side screen (PPC frames- RAL 9005)
- ⑧ High level double glazed windows (PPC frames- RAL 9005)
- ⑨ External steel doorset, factory finished colour RAL 9005.
- ⑩ Parapet wall flashing- PPC aluminium - RAL 7022
- ⑪ Individual non-illuminated white acrylic numerals
- ⑫ Signage indicative. Signage details- subject to separate application.
- ⑬ Bicycle single floor rack.
- ⑭ Service Yard hazard band bollards



The copyright of this drawing is vested with Corstorphine & Wright Ltd and must not be copied or reproduced without the consent of the company.

P-01	Updated to revised GA Plans- position on the loading door amended	19.08.2022	ASG	PH
Rev.	Description	Date	Drw.	CHK.

Client Nigra Centre Ltd		Corstorphine & Wright Warwick Studio Brook Hall, Brook Street, Warwick, CV34 4BL 01926 658 444 corstorphine-wright.com	
Project Nigra House Mulberry Business Park, Wokingham			
Drawing Title GA Elevations- Block A		Drawing No. 21821-0313	Revision P-01
Drawing Status PLANNING	Drawn ASG	Checked PT	Paper Size A1
	Scale 1:100	Date 28.04.2022	

This page is intentionally left blank